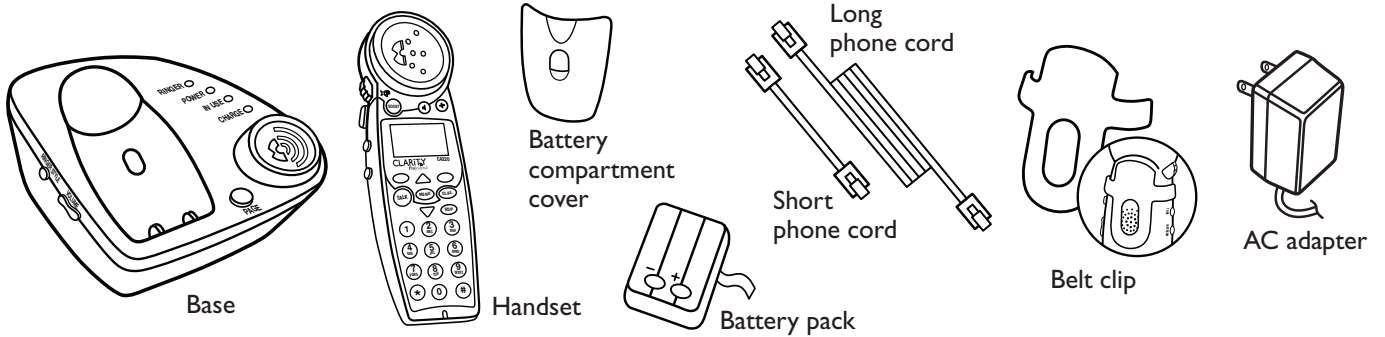
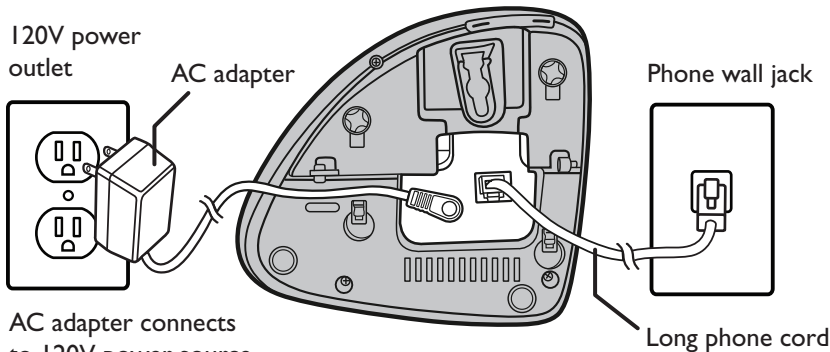


PARTS CHECKLIST



HOW TO CONNECT YOUR C4220 PHONE



AC adapter connects to 120V power source and phone

TYPICAL TABLE-TOP INSTALLATION

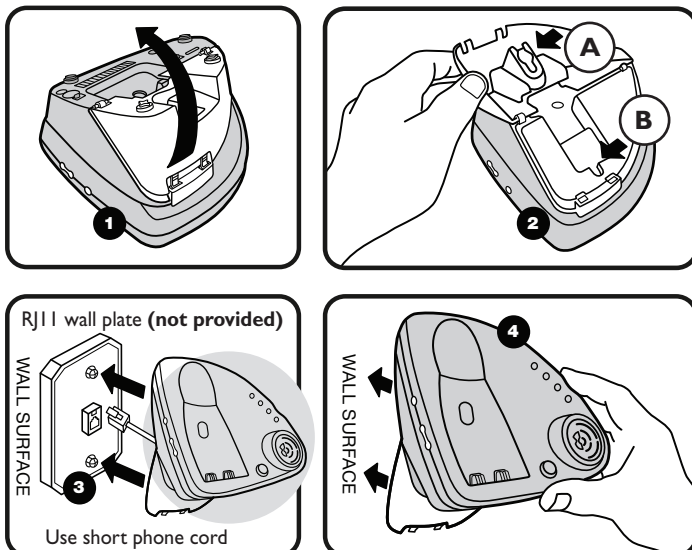
The **phone cord** plugs into the C4220 phone base as shown above. Plug the other end of the **phone cord** into a telephone wall jack.

Connect the **AC adapter** to the back of the base and a 120V wall outlet as shown above.

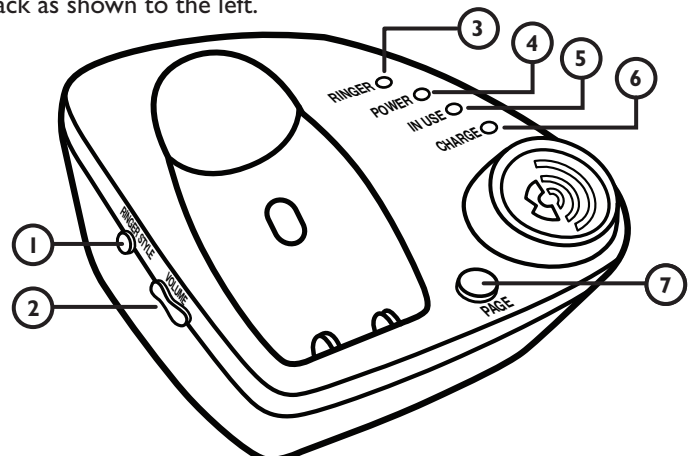
BASE FEATURES

- 1 Ringer Style button** – Press to control the ringer tone and style.
- 2 Volume** – Press to control the speaker and ringer volumes.
- 3 Ringer Style LED light** – LED will light up when ringer is activated.
- 4 Power LED** – LED will light up when the power is on.
- 5 In Use LED** – LED will light up when the phone is in use.
- 6 Charge LED** – LED will light up when handset is in base charging.
- 7 Page button** – Press to Page handset.

WALL-MOUNT INSTALLATION



Notches A and B fit on the screw-posts of the RJ11 wall-mount phone jack. Connect the (short) phone cord to the back of the phone and to the phone jack as shown to the left.



KEY HANDSET OPERATIONS

1 Talk

Press TALK button and dial number to make a call. To end call press TALK again.

2 Speaker

Press to activate handset speakerphone. Press again to switch back to earpiece.

3 Boost

When pressed, an extra level of amplification is added over the entire range of volume control. (Digital Clarity[®] Power™ Technology)

4 Volume Control

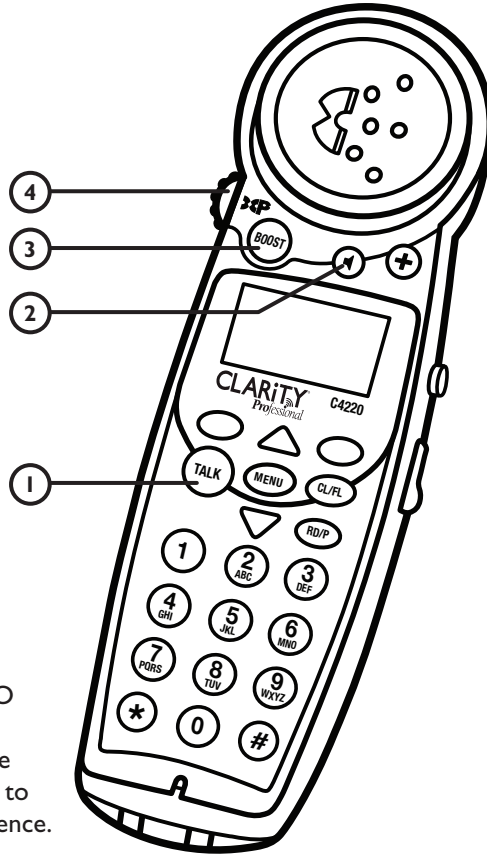
The dial controls the volume level of the handset, headset or neckloop.

5 Tone

The C4230 has four (4) AUDIO TONE settings. Pressing the TONE button changes the style of amplification and allows you to customize your hearing experience. Hearing loss is specific to each individual; therefore, we suggest exploring each setting to find the one you find most comfortable.

6 Ringer On/Off

Switch to turn Handset Ringer On or Off.



HOW TO DIAL OR RECEIVE A CALL

1. Complete connection instructions shown on reverse side of this guide.
2. Install and **charge battery** as shown below.
3. Make sure the **power LED is on** at bottom of base.
4. To receive a call pick up handset from base and press **TALK** to answer incoming call.
5. When placing a call press **TALK** and then dial the number.
6. After completing the call press **TALK** again and return handset to base unit.

STOP Handset battery must charge 12 hours before use.

Battery

- Insert battery pack such that (+) and (-) on battery touch the metal springs in battery compartment.
- Place handset on base to charge.
- Make sure the charge LED on base is illuminated.

