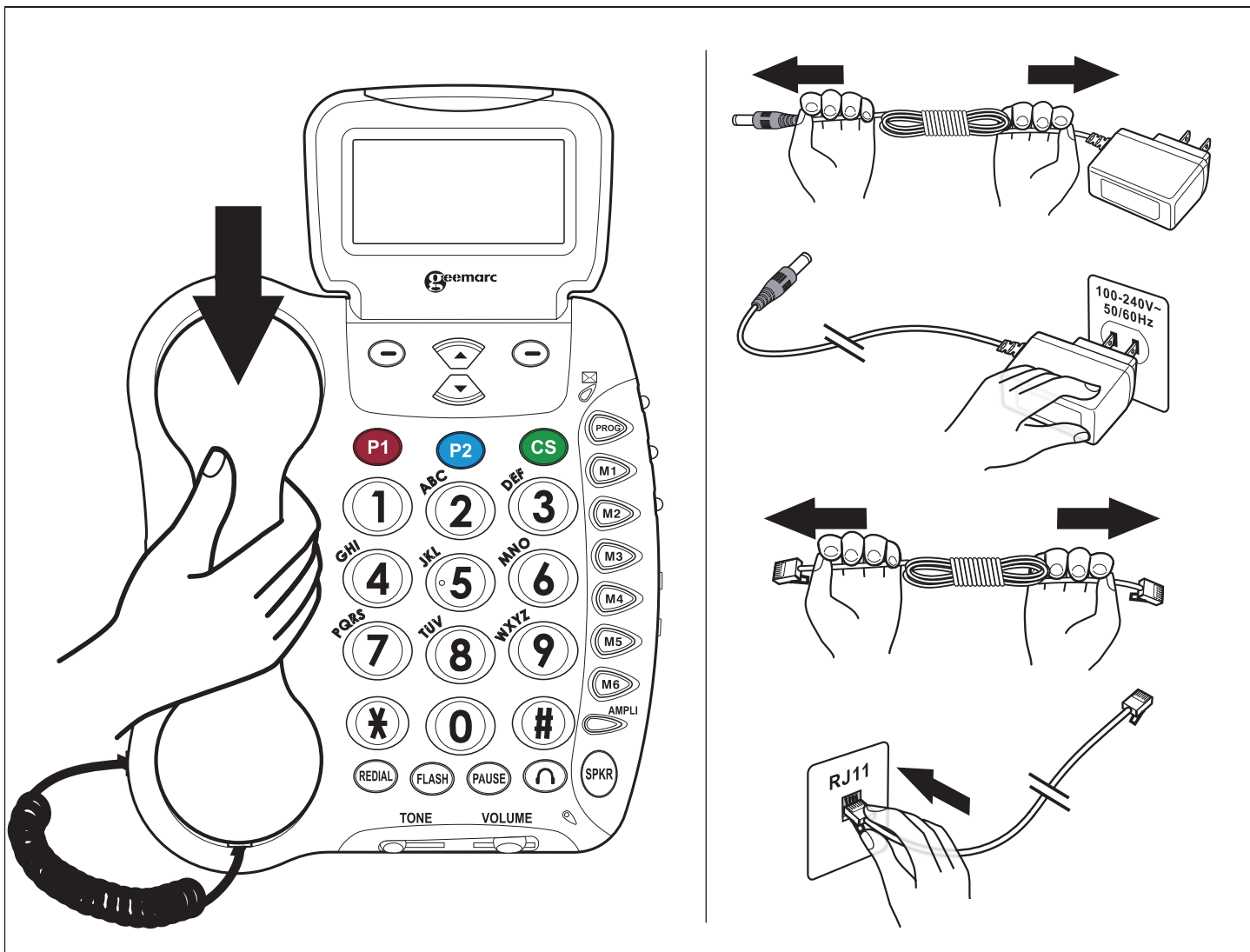


Digital Amplified Telephone

Ampli550/500+

GEEMARC QUICK REFERENCE AND INSTALLATION GUIDE

- Unpack all phone components and be sure nothing is missing
- Connect as shown below
- Phone should have power and signal
- See the back of this guide for basic operation
- Refer to the owners manual for additional detail



Digital Amplified Telephone

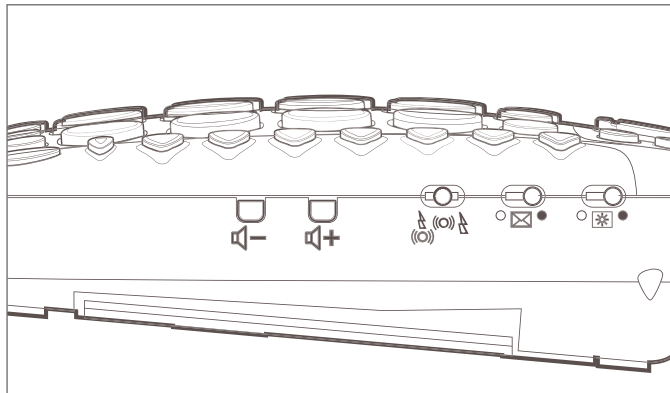
Ampli550/500+

GEEMARC QUICK REFERENCE AND INSTALLATION GUIDE



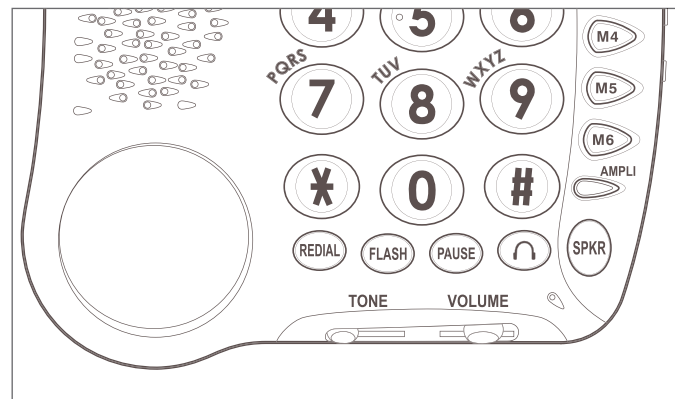
Ringer / Indicator

On the side edge of the phone are plus and minus buttons for the ringer volume. Adjust these to the desired setting. Note that there is an input jack and switch for an optional Sonic Shaker for notification through vibration.



Handset Volume & Tone

At the bottom of the phone below the number pad are adjustments for handset volume and tone. Once a call has been received, adjust by sliding the knob left or right to your individual preference.



Programming Numbers

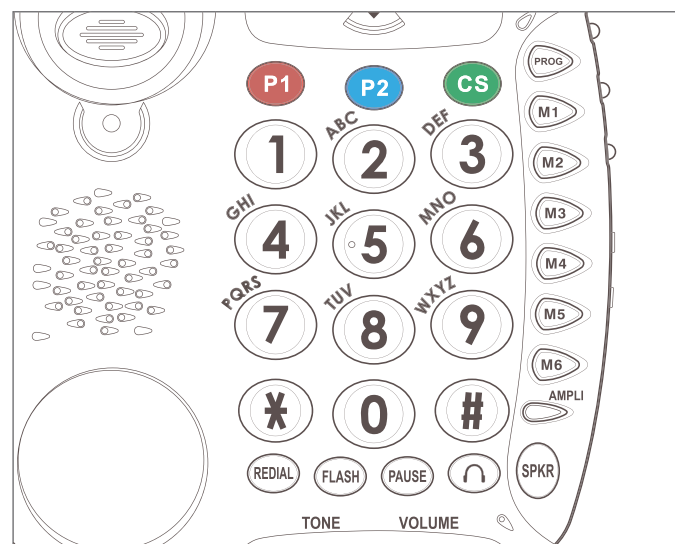
To program a number (at standby mode):

- Dial the number
- Long press PROG followed by the location, M1 through M6
- Press Save soft key
- Press Save soft key again after name stored
- Press Select soft key .

Using the same procedure, you can also program one-touch emergency numbers in the P1 and P2 locations.

One-Touch Calls

To make a call using the one-touch function, simply lift the handset, or press the speaker button, and press the desired button, M1-M6 or P1-P2, and the call will be completed as you previously programmed (a simple slide out sheet is on the right edge of the phone for you to write your stored numbers).



Because the phone has such capability, we included the CS button – Customer Service – if you should have any questions or require support for operation. That number is 888.864.2446 and can be programmed at the green CS location.