

Sonic Alert Product Update

There has been some confusion regarding our wireless doorbell signalers vs. competitors' models. We would like to explain the difference between our models and our competitors'. We believe the features and benefits of our units easily outweigh those of the competitors.

Features & Benefits of the DB100 & 200 Wireless Doorbell Signalers:

Question: Why is the Sonic Alert transmitter doorbell button larger than other wireless models?

Answer: Our transmitter button (doorbell button) is larger because of the many additional features we have added to it. Below are some of the **exclusive features** that can only be found on our units.

◆ Utilize Existing Doorbell Button-

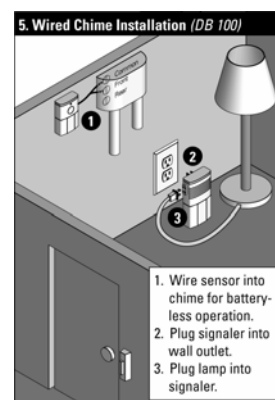
In most cases our doorbell transmitter button is not used as there is an actual doorbell button located outside the door. Unlike competitors models that require the placement of their doorbell button outside the door, **ours utilizes the homes existing doorbell button** with most installations. (see figures 2,3,4,5)

◆ Intercom Systems-

Our transmitter doorbell button is the only unit designed to work with intercom systems utilizing a state of the art **magnetic sensor vs. sound**. Our unit will only pick up the magnetic impulses from the speaker of the intercom box unlike other models that work with sound. Sound can be a problem with false trips from other sound sources like a dog barking. (See figure 3 below)

◆ Battery Free Installation-

Our transmitter button can be installed to operate battery free. By installing to an existing doorbell chime box we receive power from the chime box **eliminating the need for a battery**. With this installation the existing doorbell button that is already installed is utilized **no need to install a 2nd button outside**. (See Diagram)



◆ No Interference with Neighbors-

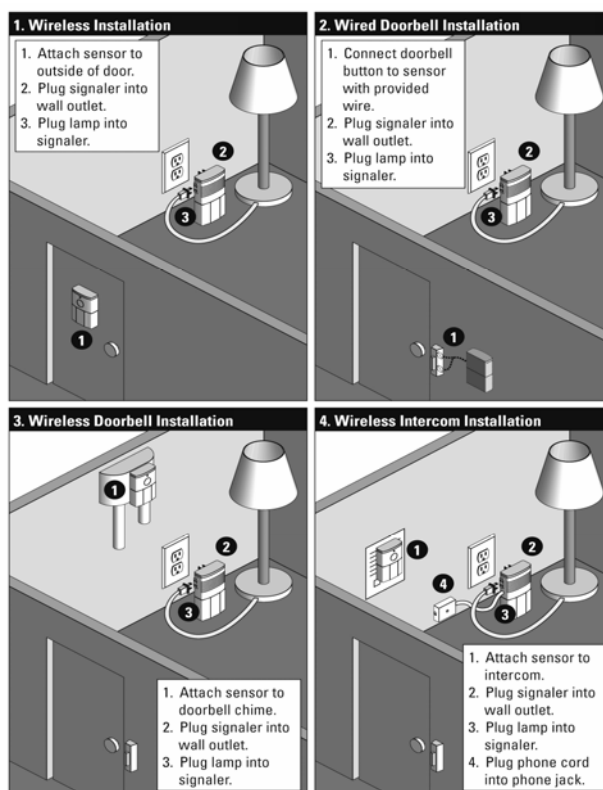
Our transmitter button has up to 64 different frequency settings so in the event of 2 or more users (up to 64) there wouldn't be any interference with the neighbor's doorbell signaler. **Doorbell signalers without this feature can experience interference with neighbors units**. Many group homes, dorms and apartments are using our units because of this feature; dials eliminate 100% of potential interference with neighbors.

◆ Multiple Doors up to 4 Are Possible-

You can add up to **3 additional transmitter buttons** in the same house all working with only 1 receiver (front, back, side door & intercom are possible) all would have their own unique flash pattern.

◆ Battery Free Installation-

The battery we use if necessary is a common 9-volt found in all drug and hardware stores. With a life span approximately **50% longer and a cost of about 30% less** than 6volt batteries. (see Diagram 5 above)



◆ 5-year warranty vs. 1-2 years.

