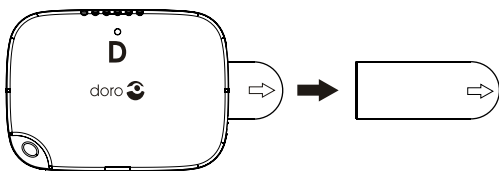
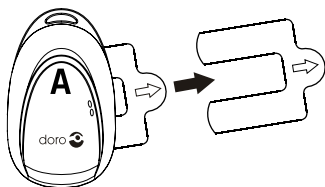
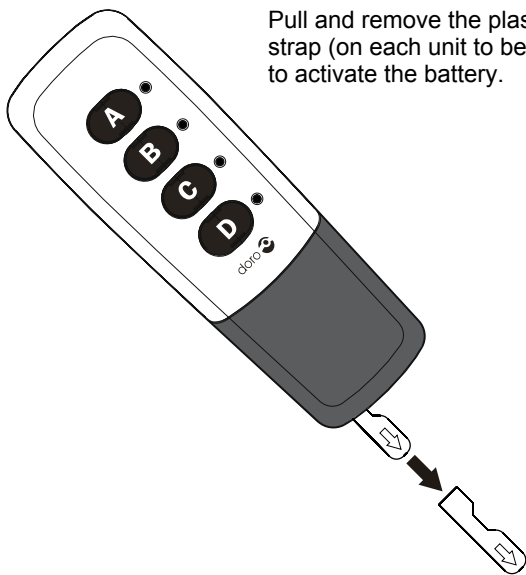
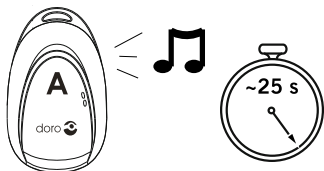
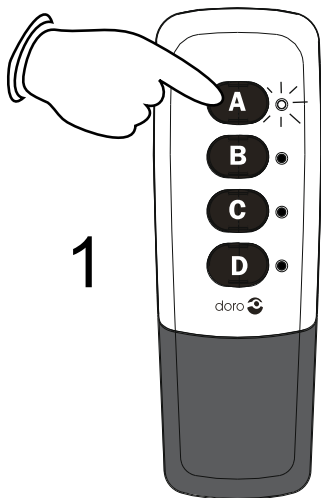


MemoryPlus 335



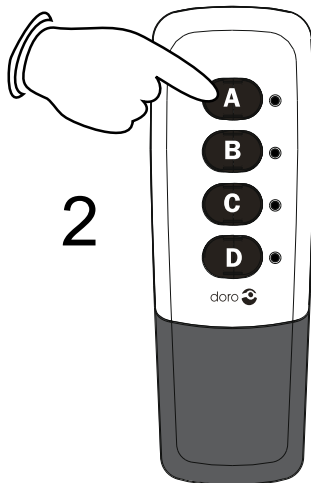
Pull and remove the plastic strap (on each unit to be used) to activate the battery.



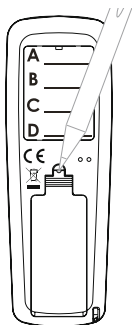


Press **A** on the remote transmitter. One short beep is heard and the LED indicator next to the key on the remote lights up.

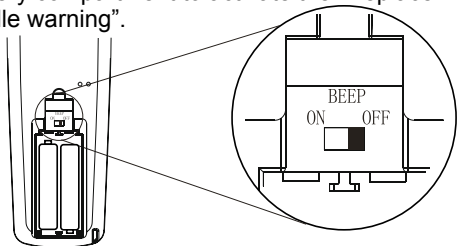
Wireless sensor **A** will start to beep (up to 25 seconds). If you haven't been able to locate the sensor when the beeping stops, press again to initiate a new search.



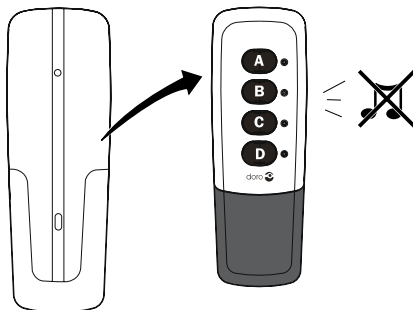
To stop the beeping, simply press **A** on the remote again (as long as the LED flashes).



The remote transmitter can be wall mounted using the supplied cradle. There's a switch in the battery compartment to activate the "Replace in cradle warning".

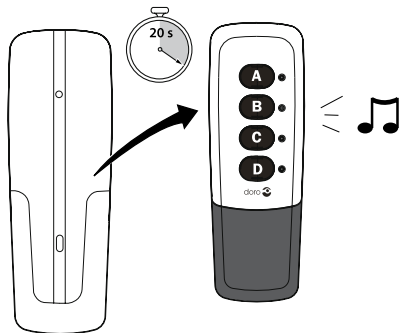


OFF =

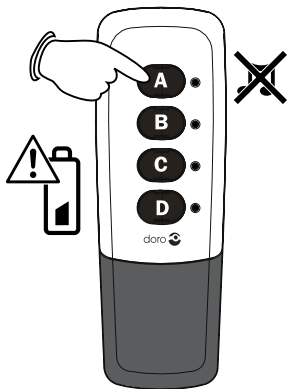


In the **OFF** position, the remote will not beep when removed from the cradle.

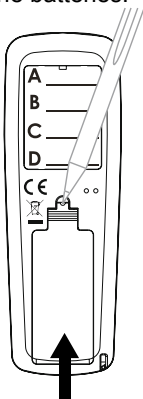
ON =



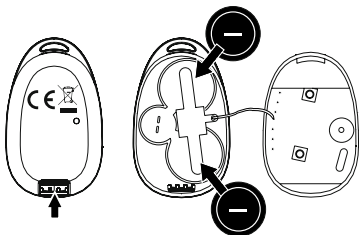
In the **ON** position, the remote will beep after 20 seconds when removed from the cradle.



If the remote doesn't work,
replace the batteries.

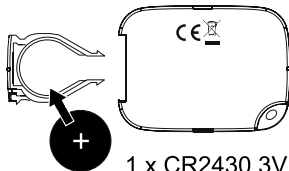
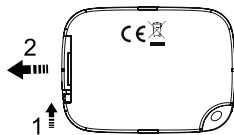
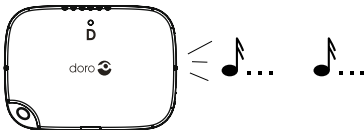


2 x AAA Alkaline



2 x CR2032 3V Li

When the batteries are running low in the wireless
sensors (a notification sound is heard from the
sensor), replace the batteries as shown.



1 x CR2430 3V Li

Disclaimer and limitation of liability

Doro AB and its affiliates, licensees and retailers assume no responsibility for any damage or loss resulting from the use of this guide. Doro AB and its affiliates, licensees and retailers assume no responsibility for any loss or claims by third parties that may arise through the use of this software. Doro AB and its affiliates, licensees and retailers assume no responsibility for any damage or loss caused by deletion of data as a result of malfunction, dead battery, or repairs. Be sure to make backup copies of all important data on other media to protect against data loss.

TO THE MAXIMUM EXTENT PERMITTED BY APPLICABLE LAW, UNDER NO CIRCUMSTANCES SHALL DORO AB OR ANY OF ITS AFFILIATES, LICENSEES AND RETAILERS BE RESPONSIBLE FOR ANY LOSS OF DATA OR INCOME OR ANY SPECIAL, INCIDENTAL, CONSEQUENTIAL OR INDIRECT DAMAGES HOWSOEVER CAUSED. THE CONTENTS OF THIS DOCUMENT ARE PROVIDED "AS IS." EXCEPT AS REQUIRED BY APPLICABLE LAW, NO WARRANTIES OF ANY KIND, EITHER EXPRESS OR IMPLIED, INCLUDING, BUT NOT LIMITED TO, THE IMPLIED WARRANTIES OF MERCHANTABILITY AND FITNESS FOR A PARTICULAR PURPOSE, ARE MADE IN RELATION TO THE ACCURACY, RELIABILITY, OR CONTENTS OF THIS DOCUMENT. DORO AB RESERVES THE RIGHT TO REVISE THIS DOCUMENT OR WITHDRAW IT AT ANY TIME WITHOUT PRIOR NOTICE.

FCC Notice

This device complies with part 15 of the FCC Rules. Operation is subject to the following two conditions: (1) This device may not cause harmful interference, and (2) this device must accept any interference received, including interference that may cause undesired operation.

This equipment has been tested and found to comply with the limits for a Class B digital device, pursuant to part 15 of the FCC Rules. These limits are designed to provide reasonable protection against harmful interference in a residential installation. This equipment generates, uses and can radiate radio frequency energy and, if not installed and used in accordance with the instructions, may cause harmful interference to radio communications. However, there is no guarantee that interference will not occur in a particular installation. If this equipment does cause harmful interference to radio or television reception, which can be determined by turning the equipment off and on, the user is encouraged to try to correct the interference by one or more of the following measures:

- Reorient or relocate the receiving antenna.
- Increase the separation between the equipment and the receiver.
- Connect the equipment to an outlet on a circuit different from that to which the receiver is connected.
- Consult the dealer or an experienced radio/TV technician for help.

Doro has not approved any changes or modifications to this device by the user. Any changes or modifications could void the user's authority to operate the equipment.

© 2009 Doro AB. All rights reserved.

IMPORTANT SAFETY INSTRUCTIONS

Your unit is a technically advanced product and should be treated with the greatest care. Negligence may void the warranty.

When using your unit, basic safety precautions should always be followed to reduce the risk of fire, electric shock and injury to persons, including the following:

1. Read and understand all instructions.
2. Follow instructions and warnings marked on the unit.
3. Do not use this product near water, for example, near a bathtub, bathroom sink, kitchen sink or laundry tub, in a wet basement or near a swimming pool.
4. Protect the unit from moisture. Rain/snowfall, moisture and all types of liquid can contain substances that corrode the electronic circuits.
5. Never spill liquid of any kind on the unit.
6. If the unit gets wet, unplug the unit from the wall outlet and remove the battery. Allow the unit to dry completely before reinserting the battery. Using the unit while wet may be dangerous.
7. Do not use or keep the unit in dusty, dirty environments. The unit's moving parts and electronic components can be damaged.
8. Do not keep the unit in warm places. High temperatures can reduce the lifespan of electronic equipment, damage batteries and distort or melt certain plastics.
9. Do not keep the unit in cold places. When the unit warms up to normal temperature, condensation may form on the inside, which can damage the electronic circuits.
10. The unit and the accessories may contain small parts. Keep the unit out of reach of small children. Never allow children to play with the unit. Small parts are a choking hazard, and the amplified volume may cause hearing damage.
11. Do not drop the unit. Do not knock or shake it, either. If it is treated roughly, the circuits and precision mechanics can be broken.

Save these instructions

IMPORTANT SAFETY INSTRUCTIONS

- 12.** Do not use harsh chemicals, cleaning solvents, or strong detergents to clean the unit.
- 13.** Do not push objects of any kind into this unit as they may touch dangerous voltage points or short out parts that could result in a risk of fire or electric shock.
- 14.** To reduce the risk of electric shock, do not disassemble this unit. Take it to the place of purchase when service or repair work is required. Opening or removing covers may expose you to dangerous voltages or other risks. Incorrect re-assembly can cause electric shock when the unit is subsequently used.
- 15.** Do not place this unit on an unstable cart, stand or table. The unit may fall, causing serious damage to the unit.
- 16.** Use only the power cord and batteries indicated in this manual.
- 17.** Never throw a battery into open flames as it may explode!
- 18.** Observe proper polarity orientation.
- 19.** Do not open or mutilate the battery. Released electrolyte is corrosive and may cause damage to the eyes and skin. It may be toxic if swallowed.
- 20.** Never use a damaged battery.
- 21.** Dispose batteries in accordance with applicable rules and regulations (e.g., recycling). Do not throw batteries out with household waste.

The advice applies to the unit, battery, AC adapter and other accessories. If the telephone is not working as it should, please contact the place of purchase for service. Don't forget the receipt or a copy of the invoice.

Save these instructions

Warranty and technical data

Guarantee

This product is under warranty for a period of 12 months from the date of purchase. In the unlikely event of a malfunction during this period, please contact the place of purchase. Proof of purchase is required for any service or support needed during the guarantee period.

This guarantee does not apply to malfunctions caused by an accident or a similar incident or damage, liquid penetrating the casing, negligence, abnormal usage, insufficient maintenance or any other circumstances due to the user's negligence. Furthermore, this guarantee does not apply to any malfunction caused by a thunderstorm or any other voltage fluctuations. As a matter of precaution, we recommend disconnecting the device during a thunderstorm.

Use only batteries of good quality.

NOTE!

This guarantee does not affect your legal (statutory) rights under your applicable national laws relating to the sale of consumer products.

Support

For assistance, please contact:

Telephone: 1-888-551-doro (1-888-551-3676)

TTY/TDD: 1-888-561-doro (1-888-561-3676)

E-Mail: support.usa@doro.com

Further information is available on our website:

www.doro.com