



**WIRELESS DOORBELL & TELEPHONE SIGNALER
MODEL DB200**

SONIC ALERT'S 5 YEAR LIMITED WARRANTY

The Wireless Doorbell & Telephone Signaler Model DB200 is warranted against manufacturing defects in materials and workmanship for five(5) years from the date of purchase. Within this period Sonic Alert will repair or replace at our option the DB200 without charge for parts and labor. Simply send the DB200 (postpaid) and a copy of your sales slip as proof of purchase to: Sonic Alert Inc., 1050 E. Maple Road, Troy MI 48083

Operation

The state-of-the-art, Doorbell & Telephone Signaler will alert you when someone comes to visit. The DB200 is the only doorbell and intercom signaler that requires no wires and can be installed in seconds. DB200 will alert you that someone is at your door by flashing a light plugged into it and any Sonic Alert receiver anywhere in your home.

The DB200 is designed to work in homes with or without an existing doorbell or chime and most existing buzzer and intercom systems.

Other features include selectable number of flashes (5 or 10), different flash code for front door, rear door, or intercom. Additional sensors (DB100T, sold separately) are required for 2nd door or intercom. There is also a built-in chime for hearing members of the family (can be turned off by using the switch on the right side of the DB200). The DB200 receives an RF radio signal from the DB sensor, and flashes the light plugged into the built-in outlet of the DB200. Use a 300-watt or less incandescent lamp only. The DB200 can send a signal to all Sonic Alert remote receivers. **Note: Must be used only with Sonic Alert receivers for proper operation, other manufacturers products are not reliable with our products.**

This device complies with Part 15 of the FCC Rules and with RSS-210 of Industry Canada. Operation is subject to the following two conditions:

- (1) This device may not cause harmful interference, and
- (2) this device must accept any interference received, including interference that may cause undesired operation.

WARNING: Changes or modifications not expressly approved by the party responsible for compliance could void user's authority to operate the equipment

DB200 Signaler

DB Sensor



INSTALLATION

To install the DB200, follow the diagrams and instructions on the following page that match the type of installation you need for your home. If the installation follows diagrams 1-4, a 9-volt alkaline battery is required in the DB sensor.

Please check the switches on your DB Sensor before installing. Do not change switches 1-6. These are pre set.

Setting The Dip Switches:



DB Sensor settings (smaller unit) dip switches 1 thru 6 are set at the factory and only need to be changed if your neighbor has a DB200 or DB100. The 8 dip switches should be set as follows:

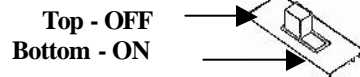
- a) 1 thru 3 dip switches are set in the ON position and 4 thru 6 are set in the OFF position. If you need to change the dip switch settings to avoid interference with your neighbors make sure you change both the DB200 Signaler to match the DB Sensor.
- b) The 7th switch is for use when using 2 sensors; this switch determines the settings for front or back door. If using for one door only set this switch in the ON position. At this setting your unit will flash at a fast rate and will make a ding/dong sound. If using 2 sensors one for the front door and one for the back door the setting for the 2nd sensor would be in the OFF position. In this position the front door will flash at a different flash rate than the back door. In the OFF position your back door sensor will flash at a slow rate with a dong/dong sound.
- c) The 8th switch determines the number of flashes when someone is at your door. In the ON position your unit will flash 5 times and in the OFF position your unit will flash 10 times. This feature is wonderful when you have an extra sensor for the back door. One sensor would be set in the ON position and the other would be set in the OFF position

Directions continued on back

Multi-Function-Input Jack:

Located on the left side of the DB Sensor, this input jack is for installations as shown below in diagram 2 & 5. .

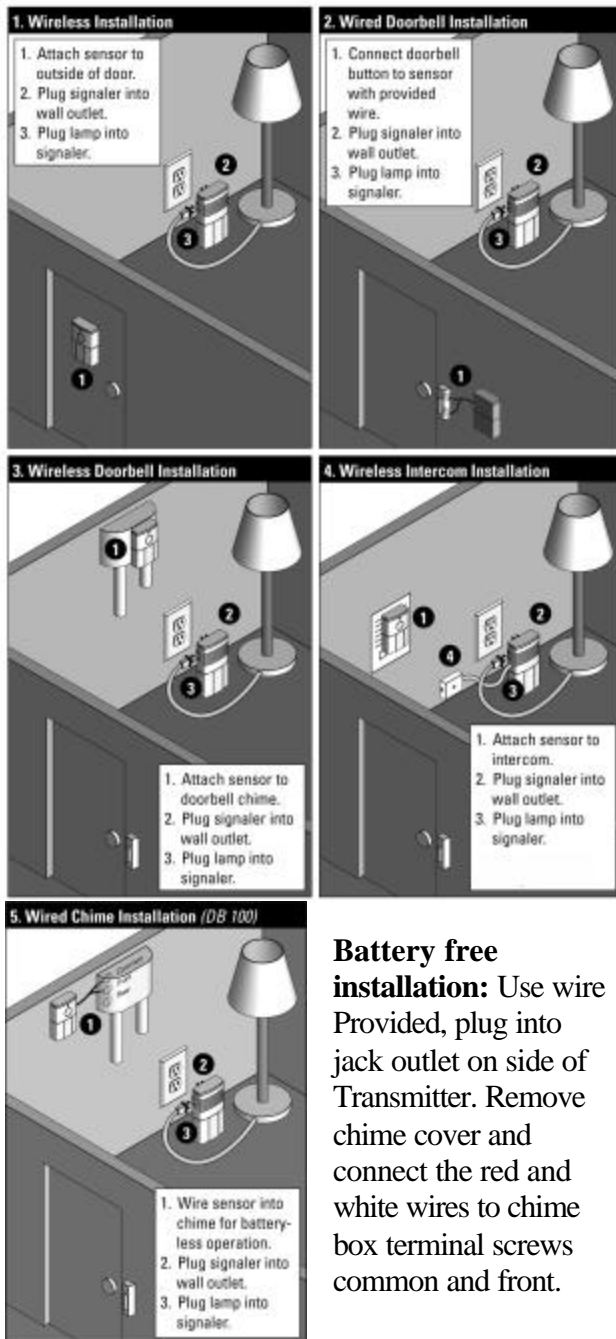
Setting The Speaker Switch:



Located on the DB200 Signaler, larger of the 2 units:

The speaker switch allows you to turn the Audio Alarm ON or OFF. ON is down and OFF is up

DB200 INSTALLATION DIAGRAMS



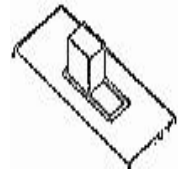
Battery free installation: Use wire Provided, plug into jack outlet on side of Transmitter. Remove chime cover and connect the red and white wires to chime box terminal screws common and front.

Setting The Function Switch:

Top position -Intercom/Buzzer System/ Wireless Chime box Installation see (3&4).

Center - Doorbell Button only see diagram 1 & 2.

Bottom - Hard Wired to Existing Doorbell Chime Box Installation see (5).



The function switch on the back of DB sensor (smaller unit) should be set depending on which installation application you need. See diagram on back.

Telephone Signaler Installation:

See figure 4 for telephone ringer cord installation. **It is necessary to use a 2 to 1 telephone adapter** (can be purchased at Radio Shack or hardware stores) if plugging in a telephone or tty in same modular outlet.



Troubleshooting & Help:

If you've followed the directions and are still having problems please try the following suggestions:

- 1) Check battery in the sensor must be a 9-volt alkaline type.
- 2) Check dip switch settings both the sensor and the signaler must match as shown in figure 1.1 above.
- 3) Check outlet for power.
- 4) Move the Signaler to an outlet closer to the sensor unit.
- 5) If using the Multi-Function input jack make sure that the wires are not touching each other. See diagram number 2 & 5 for proper installation.
- 6) Check Function setting switch for proper position.
- 7) Check that sensor is not further than 40 feet from the receiver.
- 8) For intercom installation, its important to line up the speaker icon on back of sensor located just above the battery cover to the right of the small screw. This must be centered over the speaker of the intercom. Check function switch must be set in the top position (Intercom/Buzzer System).
- 9) For Technical help call 1-248-577-5400, M-F 7:30 a.m. - 6:00 p.m. Eastern time. Or e-mail us with your questions at sonic-info@sonicalert.com

Warranty:

Thank you for purchasing this high quality Sonic Alert product. We hope you will have many years of satisfied use. This Sonic Alert product comes with a limited **5-year warranty** so please retain your receipt in safe place for possible future reference; you will need in the event of warranty service.

Sonic Alert, Inc.

1050 East Maple Rd.
Troy, MI 48083

V/TTY 1-248-577-5400 fax 248-577-5433

e-mail: sonic-info@sonicalert.com

Web Site: www.SonicAlert.com

See all our product offerings at:

www.SonicAlert.com

Or call for a free catalogue 1-248-577-5400 V/TTY

REV 1.3

